

Environmental & Molecular Toxicology

[EMT Home](#) | [Announcements](#) | [Current Newsletter](#).

EMT Quicklinks

[About the Department](#)

[People](#)

[Announcements](#)

[Seminars](#)

[Newsletter](#)

[Graduate Program](#)

[Undergraduate Minor](#)

[Collaborative Projects](#)

[Extension & Outreach](#)

[Alumni](#)

[Support EMT](#)

[Forms](#)

[Sitemap](#)

OSU Links

[College of Agricultural Sciences](#)

[Endophyte Testing Lab](#)

[Exploring Oregon](#)

[OSU Disclaimer](#)

[OSU Extension Services](#)

[OSU Library](#)

Google Search

OSU EMT



Department Of Environmental & Molecular Toxicology Newsletter

2008, Issue 12

March 2008

EMT in the News

Dr. Bailey, Dr. Baird, Dr. Beckman, Dr. Koop and Dr. Reed were featured on the cover of Chemical Research in Toxicology

Chemical Research in Toxicology recently released the 20th Anniversary issue cover which highlights photographs of authors who have contributed to the journal over the past 20 years. Review the cover.



Robert Tanguay

"OSU Scientists to Study Human Health Effects of Manufactured Nanomaterials"

Manufactured nanoparticles — any particle smaller than .25 millionths of an inch, or 1,000 times smaller than a human hair — are specifically designed in laboratories to have commercially useful properties, and it is important to determine if these novel properties produce adverse responses in animals or humans before they are commercialized, said Robert Tanguay an OSU researcher in the Department of Environmental and Molecular Toxicology. [Read full article.](#)

Kim Anderson

"You Can Take the Berry Out of the Farm, But You Can't Take the Farm Out of the Berry"

Anderson, a chemist in OSU's Environmental and Molecular Toxicology department, has developed a way to read a plant's chemical "fingerprint" to pinpoint where the plant was grown. Her work could stem the widespread mislabeling of high-value food like coffee, blueberries, strawberries, and even salmon. It could also potentially help authorities track the flow of illegal plant-based drugs. [Read full pdf article.](#)

Jennifer Field

"Oregon Gets a Statewide Drug Test"

Tom Banse reports this morning on OSU toxicologist **Jennifer Field's** new study-in-process of wastewater from communities across Oregon. The study will detail the amounts of illicit drugs and other substances found in wastewater as it enters treatment facilities and ostensibly help government officials better target where drug abuse prevention, education and treatment resources be invested. The sampling and analysis techniques behind the study are relatively new, and this is thought to be the largest application of them to date, Banse reports. [Read full article.](#)

Dave Stone

"National Pesticide Hotline Provides Information in More Than 170 Languages"

The National Pesticide Information Center (NPIC) at Oregon State University receives more than 24,000 questions each year from all 50 states and several countries. Now a new agreement means that NPIC can handle pesticide questions in more than 170 different languages. [Read full article.](#)

Recent Graduates

Karen Hippchen MS in Genetics; Buermeier Lab

Carl Isaacson PhD in Chemistry; Field Lab

Lijoy Mathew PhD in Toxicology; He has accepted a postdoctoral position at the Abramson Cancer Research Institute at the University of Pennsylvania. He will be working on hematopoietic stem cells and cancer.

Jill Schrlau MS in Chemistry; Simonich Lab

Thank You and Goodbye



Caitlin Prueitt
USDA Hops Lab



Sheila Paxton
EMT Office



Clayton Cornell
NPIC

New Faces in the Department

Faculty and Staff



Anita Balleby
Account Technician in the EMT office



Melinda Berger
Administrative Program Specialist for Jennifer Field



Kari Christiansen
Faculty Research Assistant in NPIC



Jennifer Gervais
Faculty Research Assistant in NPIC



Tammie McQuistan
Transferred to EMT, Faculty Research Assistant in the Williams Lab



Michael Simonich
Transferred to EMT and is currently a Research Associate in the Tanguay Lab



Kerry Thomas
Administrative Program Assistant in the EMT office



Mathew Wenning
Faculty Research Assistant in NPIC



Cameron Carlson
Project Specialist in NPIC

New Students



Phillip Janney
Winter Term 2008

Babies!!

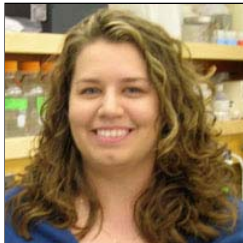


Jackson George Duringer
Born December 9, 2007
to Jenni and Tim Duringer

Jackson was 6 pounds, 10 ounces and 19 3/4 inches long. Dad (Tim) is a pharmacist at Sacred Heart Medical Center in Eugene. Mom and dad are thoroughly enjoying the new little one, watching him grow each day. He attended his first scientific conference in March at SOT in Seattle!

Awards

Abby D. Benninghoff and Stacey L. Harper were recognized as Environmental Health Science Communication Fellows.



Abby D. Benninghoff (left) uses her background in marine science and biochemical toxicology to understand how pollutants can interfere with crucial chemical signaling messages in cells to disrupt normal endocrine activity at the gene level in wildlife and humans.

Stacey L. Harper (right) studies how very small substances, called nanomaterials, interact with cells, tissues and systems of plants and animals. Her goal is to determine how the widely used particles in manufacturing and consumer products affect the health of living organisms.



Daniel Koch

Both Dan and Katerine were awarded Supplemental Oregon Laurels Scholarships for the academic year of 2008-2009



Katerine Saili

Lab News

Anderson Lab

Annual North America SETAC abstracts from the FSES lab

Overcoming the technical challenges of an international human and ecological health risk project in Western Africa. . . **G. Sower; M. Sarr; A. Ackerman; C. Toure; W. Hillwalker; L. Quarles; K. Anderson**

Field Validation and Modified Methods for Lipid-Free Polyethylene Membrane Passive Sampler. **L. Quarles; A. Ackerman; G. Sower; W. Hillwalker; K. A. Anderson**

Human Health Assessment Approach Bridges Environmentally Relevant Contaminant Mixtures and Early Life-Stage Developmental Toxicity. Shorey, **L.E.; Hillwalker, W.E.; Tanguay, R.; Anderson, K.A.**

Comparison of Metal Speciation Tools at a Superfund Site. **Hillwalker, W.E.; Anderson, K.A.**

Protecting the Nations food supply: Use of chemical profiling to determine the origin of food commodities. **Hobbie, K.A.; Perez, A.L.; Smith, B.W.; Anderson, K.A.**

Does DGT absorbed Cd from fertilizer field studies predict plant availability and accumulation in soil? **Perez, A.L.; Anderson, K.A.**



Greg Sower traveled to West Africa during a 6-week training event in Sept/Oct 2007 to transfer aquatic passive sampling technology and expertise from OSU to the Centre de Recherches en Ecotoxicologie pour le Sahel/LOCUSTOX laboratory, Dakar, Senegal. Greg was involved in both field and laboratory exercises. The visit fulfilled an objective of the UN-GEF/FAO funded partnership with OSU towards reducing dependence on POPs and other agrochemicals in the Senegal and Niger river basins through integrated production, pest and pollution management.



Angie Perez was awarded the Diversity Advancement Pipeline Fellowship (2007-2008) for a full year of graduate support.

Angie Perez was awarded a \$500 cash prize for 'best student presentation' for her platform talk titled: Nickel Bioavailability Measured by Diffusive Gradient Thin-Films from a four year fertilizer field dose study at The Association for Environmental Health and Sciences 17th Annual Meeting, (2007) San Diego, CA, USA. She accepted her winnings and went to wildlife safari San Diego and went on a hydrogen balloon ride!

Bailey Lab

New Publications

Simonich, M.T., McQuistan, T., Jubert, C., Pereira, C., Hendricks, J.D., Schimerlik, M., Zhu, B., Dashwood, R.H., Williams, D., and Bailey, G.S. (2008). Low-dose dietary chlorophyll inhibits multi-organ carcinogenesis in the rainbow trout. *Food Chem. Tox.* 46:1014-1024.

Kerkvliet Lab

The Kerkvliet Lab recently celebrated the citizenship of **Duy Pham**, a student worker in the lab. Congratulations Duy!



Tanguay Lab

Awards

Stacy Harper



- Will serve as a 2008 Science Communication Fellow for EnvironmentalHealthNews.org. (see above)
- Is serving as the Oregon Nanoscience and Microtechnologies Institute representative for the ANSI-accredited U.S. Technical Advisory Group for ISO/TC 229. This group functions to formulate positions and proposals on behalf of the U.S. with response to ISO standardization activities and provides delegates and experts on Environmental Health and Safety Nanotechnologies.
- Was one of six international scientists selected to speak at the 6th annual iNANO conference held in Denmark on January 23rd at the Interdisciplinary Nanosciences Center, University of Aarhus.

New Publications

Harper, S.L., J.A. Dahl, B.L.S. Maddux, R.L. Tanguay and J.E. Hutchison. 2008. Proactively designing nanomaterials to enhance performance and minimize hazard. *International Journal of Nanotechnology*, 5: 124-142.

Harper, S.L. Review of Nanotoxicology: Characterization, Dosing and Health Effects. Doody's Review Service (on-line). Available: <http://www.doody.com>. (Accessed 1/07/08).

Usenko, C.Y., S.L. Harper and R.L. Tanguay. 2008. Exposure to C60 elicits an oxidative stress response in embryonic zebrafish. *Toxicology and Applied Pharmacology*, doi:10.1016/j.taap.2007.12.030.

Evans, B.R., Karchner, S.I., Allan, L.L., Pollenz, R.S., Tanguay, R.L., Jenny, M.J., Sherr, D.H., and Hahn, M.E. Repression of aryl hydrocarbon receptor (AHR) signaling by AHR repressor (AHRR): Role of DNA binding and competition for ARNT. *Mol Pharmacol* (In press).

Williams Lab

New Manuscripts

David Castro

- **Castro, D.J.,** Yu, Z., Löhr, C.V., Pereira, C.B., Giovanini, J., Fischer, K.A., Orner, G.A., Dashwood, R.H., and Williams, D.E. (2008) Chemoprevention of Dibenzo[*a,h*]pyrene Transplacental Carcinogenesis in Mice Born to Mothers Administered Green Tea: Primary Role of Caffeine. (In Press, Carcinogenesis).
- **Castro, D.J.,** Baird, W.M., Pereira, C.B., Giovanini, J., Löhr, C.V., Fischer, K.A., Yu, Z., Gonzalez, F.J., Krueger, S.K, and Williams, D.E. (2008). Fetal Mouse Cyp1b1 and Transplacental Carcinogenesis from Maternal Exposure to Dibenzo[*a,h*]pyrene. (In press, Cancer Prevention Research).

New Publications

Siddens LK, Henderson MC, Vandyke JE, Williams DE, Krueger SK. 2008. Characterization of mouse flavin-containing monooxygenase transcript levels in lung and liver, and activity of expressed isoforms. *Biochem Pharmacol*.15;75(2):570-9.

EMT Office

New Faces in the Office

Anita Balleby joined the EMT Office Staff as our Grants and Contracts Technician on February 25th. Previous to joining our department Anita worked in the accounting field for the private sector for years most recently for the Corvallis Chamber of Commerce and the Business Enterprise Center.

Anita is assuming duties that were previously performed by Sheila Paxton and additional duties related to grant budgets. Anita will work part-time through the month of March and begin working full-time in April.

Anita is available to assist you with:
 Budgets for Grant Proposals
 Cost Share questions
 Dues and subscriptions for faculty
 Faculty Grant Reports
 Invoicing for Analyses
 Invoice Payment
 Labor Distributions
 Meeting Registrations
 Ordering Business Cards
 PAR Forms
 Process VISA Orders and Payments
 Purchasing
 Receive signed packing slips for orders
 Reimbursements
 Returns
 Travel

You can contact Anita at 737-1768, anita.balleby@oregonstate.edu, EMT Office 1007 ALS.

Kerry Thomas joined the EMT Office Staff on December 10th. Kerry came to EMT from the College of Liberal Arts where she had been an Academic Advisor for fall term. Kerry graduated from OSU in June 2007 with a Bachelor of Arts in Economics. During her time at OSU she worked in the Academic Success Center and as a tutor for student athletes and non-traditional

students. Kerry has been able to step right in and contribute to the success of our students, faculty and staff.

Kerry is available to help you with:
Administration of the Graduate Program
After Hours Passes
Bulletin Board Notices
Class Overrides
Copy and Fax Machine Assistance
Curriculum Proposals and Coordination
Event Planning
Grade Entry
Grant Submission
Key Requests
Schedule of Classes (Updates & Changes)
Scheduling of the conference room and equipment
Seminars
Teaching Assistance
Web Updates

You can contact her at 737-9079, kerry.thomas@oregonstate.edu, EMT Office 1007 ALS.

Dr. Craig Marcus

In February CAS Dean Dutson announced that Dr. Craig Marcus accepted our invitation to join the College of Agricultural Sciences faculty as head of the Department of Environmental and Molecular Toxicology.

Dr. Marcus will join our department mid-May. He is currently vice dean of the College of Pharmacy and professor of toxicology at the University of New Mexico. Dr. Marcus also serves as assistant director of the Center for Environmental Health Sciences at UNM.

After earning degrees in biochemistry and entomology with an emphasis in toxicology at the University of Wisconsin-Madison, he served in post-doctoral positions at the University of Wisconsin and at Cornell University. He then held a faculty appointment at Purdue University, including as coordinator of graduate studies in toxicology and as associate professor in Purdue's Cancer Center. He joined the College of Pharmacy at University of New Mexico in 1996 and has served in a variety of roles there.

Dr. Marcus' research emphasis is drug metabolism. He has extensive experience as an invited reviewer for the National Institutes of Health, the National Institute of Environmental Health Sciences, and the National Science Foundation. In addition to leadership in research, Craig was recognized last year as his college's Teacher of the Year.

We are pleased that Dr. Marcus will join our department and look forward to his research and leadership contribution. You will be able to reach Dr. Marcus at 737-1883, craig.marcus@oregonstate.edu EMT Office ALS 1007.

Sheila Paxton

A big thank you and good luck to Sheila Paxton. Sheila retired as of December 31st after 18.5 years of service to our Department. Sheila worked those years as the EMT Accounting Technician. She was dedicated to helping our students, staff and faculty order products and supplies, assisting them where needed, and sharing her humor with all. Sheila plans to spend her retirement years enjoying her grand children and family.

Past Issues

[ISSUE 11, September 2007](#)

[ISSUE 10, October 2006](#)

[ISSUE 9, JULY 2006](#)

[ISSUE 8, APRIL 2006](#)

[ISSUE 7, JANUARY 2006](#)

[ISSUE 6, OCTOBER 2005](#)

[ISSUE 5, JULY 2005](#)

[ISSUE 4, APRIL 2005](#)

[ISSUE 3, JANUARY 2005](#)

[ISSUE 2, OCTOBER 2004](#)

[ISSUE 1, JULY 2004](#)

If there is any information that YOU would like to include in the next newsletter, which is scheduled for the end of spring term please send it via email to Kerry.Thomas@oregonstate.edu



Department of Environmental and Molecular Toxicology,
1007 Agriculture and Life Sciences Building
Oregon State University, Corvallis, OR 97331
Contact us with your comments and questions | 541-737-3791
Copyright © 2006 Oregon State University | [Disclaimer](#)