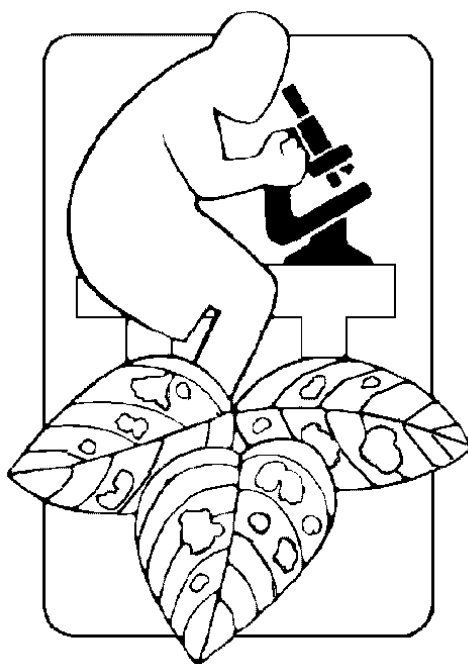


Pesticide Registrations in Oregon and Washington Berry Crops

January 12, 2016



Prepared by:

Joe DeFrancesco

Oregon State University

North Willamette Research and Extension Center

Department of Horticulture

Integrated Plant Protection Center

2040 Cordley Hall

Corvallis, Oregon 97331-2915

541-737-0718

defrancj@science.oregonstate.edu

This document is just a guide and not intended as a recommendation or endorsement. Pesticide registrations and labels are subject to change. The label is the law. Consult with your supplier, field representative, pest consultant or OSU Extension Service prior to pesticide use.

Insecticides/Miticides

Trade Name	Chemical Name	Straw ^b	Rasp ^b	Blackb	Blueb	PHI ^a (days)	REI ^b (hours)	IRAC ^c
Acramite	Bifenazate	x	x	x		1	12	25
Actara	Thiamethoxam	x	x	x	x	3	12	4A
Admire (soil applied)	Imidacloprid	x	x	x	x	Straw=14; Cane/Blue = 7	12	4A
Admire Pro (foliar applied)	Imidacloprid	x	x	x	x	Straw=7; Cane/Blue = 3	12	4A
Agri-mek	Abamectin	x				3	12	6
Altacor	Chlorantraniliprole		x	x	x	Cane = 3; Blue = 1	4	28
Asana XL	Esfenvalerate		x	x	x	Cane = 7; Blue = 14	12	3A
Assail	Acetamiprid	x	x	x	x	1	12	4A
Avaunt	Indoxacarb				x	7	12	22A
Beleaf	Flonicamid	x				0	12	9C
Belt	Flubendiamide	x				8	12	28
Brigade	Bifenthrin	x	x	x	x	Straw = 0 Cane = 3; Blue = 1	12	3A
Bt	DiPel, Javelin, MVP	x	x	x	x	0	4	11B2
Closer	Sulfoxaflor	x				1	12	4C
Confirm	Tebufenozide		x	x	x	14	4	18A
Coragen	Chlorantraniliprole	x				1	4	28
Courier	Buprofezin	x				3	12	16
Cryolite Bait	Cryolite	x ^{0, w}	x ^{0, w}	x ^{0, w}	x ^{0, w}	3	12	9A
Danitol	Fenpropathrin	x	x	x	x	Straw = 2 Cane & Blue = 3	24	3A
Delegate	Spinetoram		x	x	x	Cane = 1; Blue = 3	4	5
Diazinon	Diazinon	x	x	x	x	Straw = 5 Cane & Blue = 7	Straw= 3 days; Cane & Blue = 5 days	1B
Dibrom	Naled	x				1	48	1B
Esteem	Pyriproxyfen	x	x	x	x	Cane & Blue=7; Straw=2	12	7C
Exirel	Cyantraniliprole				x	3	12	28
Fujimite	Fenpyroximate	x				1	12	21A
Imidan	Phosmet				x	3	24	1B
Intrepid	Methoxyfenozide	x	x	x	x	Blue=7; Straw&Cane =3	4	18A
Kanemite	Acequinocyl	x	x	x		1	12	20B
Knack	Pyriproxyfen		x	x	x	7	12	7C
Lannate	Methomyl				x	3	48	1A
Lorsban	Chlorpyrifos	x				21	24	1B
Malathion	Malathion	x	x	x	x	Cane & Blue = 1; Straw = 3	12	1B
Mocap	Ethoprop				x [*]	365	48	1B
MSR Spray	Oxydemeton-methyl	x ^w	x ^{w, *}	x ^{w, *}		Straw = prebloom Cane = 365	Straw = 15 days Cane = 16 days	1B
Mustang	Zeta-cypermethrin		x	x	x	1	12	3A
Mycotrol	<i>Beauveria bassiana</i>	x	x	x	x	0	12	?
Nealta	Cyflumetofen	x				1	12	25
Neem	Aza-Direct, Neemix, others	x	x	x	x	0	4	18B
Oberon	Spiromesifen	x				3	12	23
Platinum	Thiamethoxam	x			x	Straw = 50; Blue = 75	12	4A
Provado 1.6F	Imidacloprid	x	x	x	x	Straw = 7 Cane & Blue = 3	12	4A
Pyganic	Pyrethrin	x	x	x	x	0	12	3A
Pyrellin	Rotenone + Pyrethrin	x	x	x	x	12 hours	12	21B + 3A
Radiant	Spinetoram	x				1	4	5
Rimon	Novaluron	x			x	Straw = 1 Blue = 8	12	15
Savey	Hexythiozox	x	x	x		3	12	10A
Sevin	Carbaryl	x	x	x	x	7	12	1A
Sivanto	Flupyradifurone	x			x	Straw = 0; Blue = 3	4	4D
Vendex	Hexakis	x	x			Straw = 1; Rasp = 3	48	12B
Zeal	Etoazole	x	x ^s	x ^s		Straw = 1; Cane = 0	12	10B
Soaps	Safer, M-Pede	x	x	x	x	0	12	?
Success, Entrust	Spinosad	x	x	x	x	Straw = 1; Blue = 3; Cane = 1	4	5
Thiodan	Endosulfan	x				4	2 days	2A
Vendex	Hexakis	x	x			Straw = 1; Rasp = 3	48	12B
Zeal	Etoazole	x	x ^s	x ^s		Straw = 1; Cane = 0	12	10B

* = Non-bearing only; ^s = Supplemental label, ^o = SLN Registration (24c) for Oregon, ^w = SLN Registration (24c) for Washington; **Bold Text = Organic**

Fungicides

Trade Name	Chemical Name	Straw ^b	Raspb	Blackb	Blueb	PHI ^a (days)	REI ^b (hours)	FRAC ^e
Abound	Azoxystrobin	x	x	x	x	0	4	11
Actigard	Acibenzolar	x				0	12	21
Actinovate AG	<i>Streptomyces lydicus</i>	x	x	x	x	0	1	?
Aliette	Fosetyl-al	x	x	x	x	Straw&Blue=0;Cane=60	12	33
Bravo	Chlorothalonil				x	42	12	M5
Cabrio	Pyraclostrobin	x	x	x		0	24	11
Captan	Captan	x	x	x	x	Straw&Blue=0;Cane = 3	Straw=24; Cane/ Blue=72	M4
Captevate	Captan + fenhexamid	x	x		x	Straw&Blue=0;Rasp = 3	Straw =24 Cane & Blue =48	M4 + 17
Coppers	Kocide, Champ , others	x	x	x	x	None listed	Varies; Check label	M1
Elevate	Fenhexamid	x	x	x	x	0	12	17
Evito	Fluoxastrobin	x				1	12	11
Flint	Trifloxystrobin	x				0	12	11
Fontelis	Penthiopyrad	x				0	12	7
Fosphite, Phostrol, others	Phosphorous acid	x	x	x	x	None listed	4	33
Inspire Super	Difenconazole+cyprodinil	x			x	Straw = 0; Blue = 7	12	3 + 9
Indar	Fenbuconazole				x	30	12	3
Kenja	Isfetamid	x				0	12	7
Lime Sulfur	Calcium Polysulfide		x	x	x	Delayed dormant	Varies; Check label	?
Merivon	Fluxapyrosad+pyraclostrobin	x				0	12	7 + 11
Meteor	Iprodione		x	x	x	0	24	2
Mettle	Tetrazonazole	x				0	12	3
Oil	BioCover; Sun; JMS	x	x	x	x	Delay. dorm. or Post Har	4	?
Omega	Fluazinam				x	30	2 - 3 days	29
Ph-D, Tavano, Oso	Polyoxin-D	x	x	x	x	0	4	19
Potassium bicarbonate	Kaligreen, Milstop	x	x	x	x	1	4	?
Pristine	Boscalid+pyraclostrobin	x	x	x	x	0	24	7 + 11
Procure	Triflumizole	x				1	12	3
Proline 480	Prothioconazole				x	7	12	3
Protexio	Fenpyrazamine	x	x		x	0	12	17
Quadris Top	Azoxystrobin+difenconazole	x			x	Straw = 0; Blue = 7	12	11+ 3
Quash	Metconazole				x	7	12	3
Quilt Xcel	Azoxystrobin+propiconazole	x	x	x	x	Cane & Blue=30; Straw=0	12	11 + 3
Quintec	Quinoxifen	x ^s				1	12	13
Rally	Myclobutanil	x	x	x		0	24	3
Regalia	<i>Reynoutria sachalinensis</i>	x	x	x	x	0	4	?
Ridomil Gold	Mefenoxam	x	x	x	x	Blue&Straw=0;Cane= 45	48	4
Ridomil Gold Copper	Mefenoxam + Cop. Hydrox.		x	x		0	48	4 + M1
Rovral	Iprodione	x	x	x		Straw=prebloom;Cane=0	24	2
Scala	Pyrimethanil	x				1	12	9
Serenade	<i>Bacillus subtilis</i>	x	x	x	x	0	4	?
Sulfur	Microthiol , other brands	x	x	x	x	None listed	24	M2
Syllit	Dodine	x				14	48	M7
Switch	Cyprodinil + fludioxonil	x	x	x	x	0	12	9 + 12
Tanos	Cymoxanil+ famoxadone		x	x		0	12	27 + 11
Tavano (+ PH-D for straw)	Polyoxin D	x	x	x	x	0	4	19
Thiram	Thiram	x				3	24	M3
Tilt; PropiMax; Bumper	Propiconazole	x	x	x	x	Cane & Blue=30; Straw=0	12	3
Topsin-M	Thiophanate methyl	x				1	12	1
Torino	Cyflufenamid	x				0	4	U6
Ziram Granuflo	Ziram			x	x	Consult label	48	M3

* = Non-bearing only, ^s = Supplemental label, ^o = SLN Registration (24c) for Oregon, ^w = SLN Registration (24c) for Washington; **Bold Text = Organic**

Herbicides

Trade Name	Chemical Name	Strawb	Raspb	Blackb	Blueb	PHI ^a (days)	REI ^b (hours)	HRG ^d
2,4-D amine	Formula 40 (strawberry) Saber (blueberry)	×			× ^{o, w}	Straw = dormant; Blue = 30	48	4
Aim	Carfentrazone	×	×	×	×	Cane=15;Blue&Straw =0	12	14
Basagran (Arysta label)	Bentazon		× ^{*,s}	× ^{*,s}	× ^{*,s}	365 days	48	6
Callisto	Mesotrione		×	×	×	Pre-bloom	12	27
Casoron	Dichlobenil		×	×	×	Avoid new shoots	12	20
Chateau, Warfox	Flumioxazin	× ^s	× ^{*, o, w}		× ^s	Straw= prior to fruit set Blue = 7; Rasp = 365	12	14
Dacthal	DCPA	×				Use pre bloom	12	?
Devrinol	Napropamide	×	×	×	×	Spring or fall use	12	15
Dual Magnum	S-metolachlor		× ^{o, w}	× ^{o, w}	× ^{o, w}	28	24	15
Fusilade	Fluazifop	× [*]	× [*]	× [*]	× [*]	365	12	1
Gallery	Isoxaben		× [*]	× [*]	× [*]	365	12	21
Goal	Oxyfluorfen		× ^{o, w}	× ^o		Rasp = 50; Black = 15	24	14
Gramoxone	Paraquat	×	×	×	×	Cane&Blue = Prior to new canes; Straw = 21	24	22
Karmex	Diruon		×	×	×	Late spring or fall	12	7
Kerb	Pronamide		×	×	×	Fall or winter use	24	3
Matrix	Rimsulfuron		× ^s	× ^s	× ^s	21	4	2
Poast	Sethoxydim	×	×	×	×	Straw = 7 Cane = 45; Blue = 30	12	1
Prowl	Pendimethalin	×				35	24	3
Rely	Glufosinate				×	14	12	10
Roundup, others	Glyphosate	×	×	×	×	Straw = 3 Cane & Blue = 14	4	9
Sandea	Halosulfuron		×	×	×	14	12	2
Scythe	Pelargonic acid	×	×	×	×	1	24	?
Select Max, Arrow	Clethodim	×	× ^s	× ^s	× ^s	Straw = 4; Cane = 7 Blue = 14	24	1
Simazine	Princep	×	×	×	×	Spring or fall use	12	5
Sinbar	Terbacil	×	×	×	×	Cane = 70 days Straw & Blue = spring/fall	12	5
Solicam	Norflurazon		×	×	×	60	12	12
Spartan	Sulfentrazone	× ^{o, w}				70	12	14
Stinger	Clopyralid	× ^{o, w}			× ^{o, w}	30	12	4
Surflan	Oryzalin		×	×	×	Spring or fall use	12	3
Velpar	Hexazinone				×	90	24	5
Vinegar (Weed Pharm)	Acetic acid	×	×	×	×	0	48	?
Zeus XC	Sulfentrazone		×	×	×	3	12	14

* = Non-bearing only; ^s = Supplemental label, ^o = SLN Registration (24c) for Oregon, ^w = SLN Registration (24c) for Washington; **Bold Text = Organic**

Other

Trade Name	Chemical Name	Strawb	Raspb	Blackb	Blueb	PHI ^a (days)	REI ^b (hours)
Bird Shield; ReJex-iT	Methyl Anthranilate				×	6	Undefined
Deadline, others	Metaldehyde	×	×	×	×	None listed; assume zero day	12
Dormex	Hydrogen cyanamide				×	Dormancy	72
Ethrel	Ethephon			×	×	Black = 3; Blue = 7	48
Prozap Z-P Pellets	Zinc Phosphide		×	×	×	Check label for details	24
Sluggo	Iron Phosphate	×	×	×	×	0	0

Legend:

- ^a **PHI:** The preharvest interval (PHI) is the amount of time that must elapse between the last application of a pesticide and harvest of the crop. PHI (usually days) is found on the label in the use directions for each crop that is listed on the label.
- ^b **REI:** All pesticide products have a prescribed-time restricted entry interval (REI) for worker protection. REI is clearly stated in the Agricultural Use Requirements section on the label. Generally, entry into treated areas during the prescribed time (usually hours) REI is not allowed unless Personal Protective Equipment (PPE) is worn or used.
- ^c **IRAC:** Insecticide (and Miticide) Resistance Action Committee Code Number. Insecticides/ Miticides with the same number should not be used consecutively, as they are similar in chemistry and/or mode of action and doing so may increase the risk of resistance.
- ^d **HRG:** Herbicide Rotation Guide (from the Weed Science Society of America). To avoid selecting for herbicide-resistant weeds, do not use herbicides from the same group more than once within three years. Rather, rotate to a different group every year of the production system.
- ^e **FRAC:** Fungicide Resistance Action Committee Code Number. Fungicides with the same number should not be used consecutively, as they are similar in chemistry and/or mode of action and doing so may increase the risk of resistance.